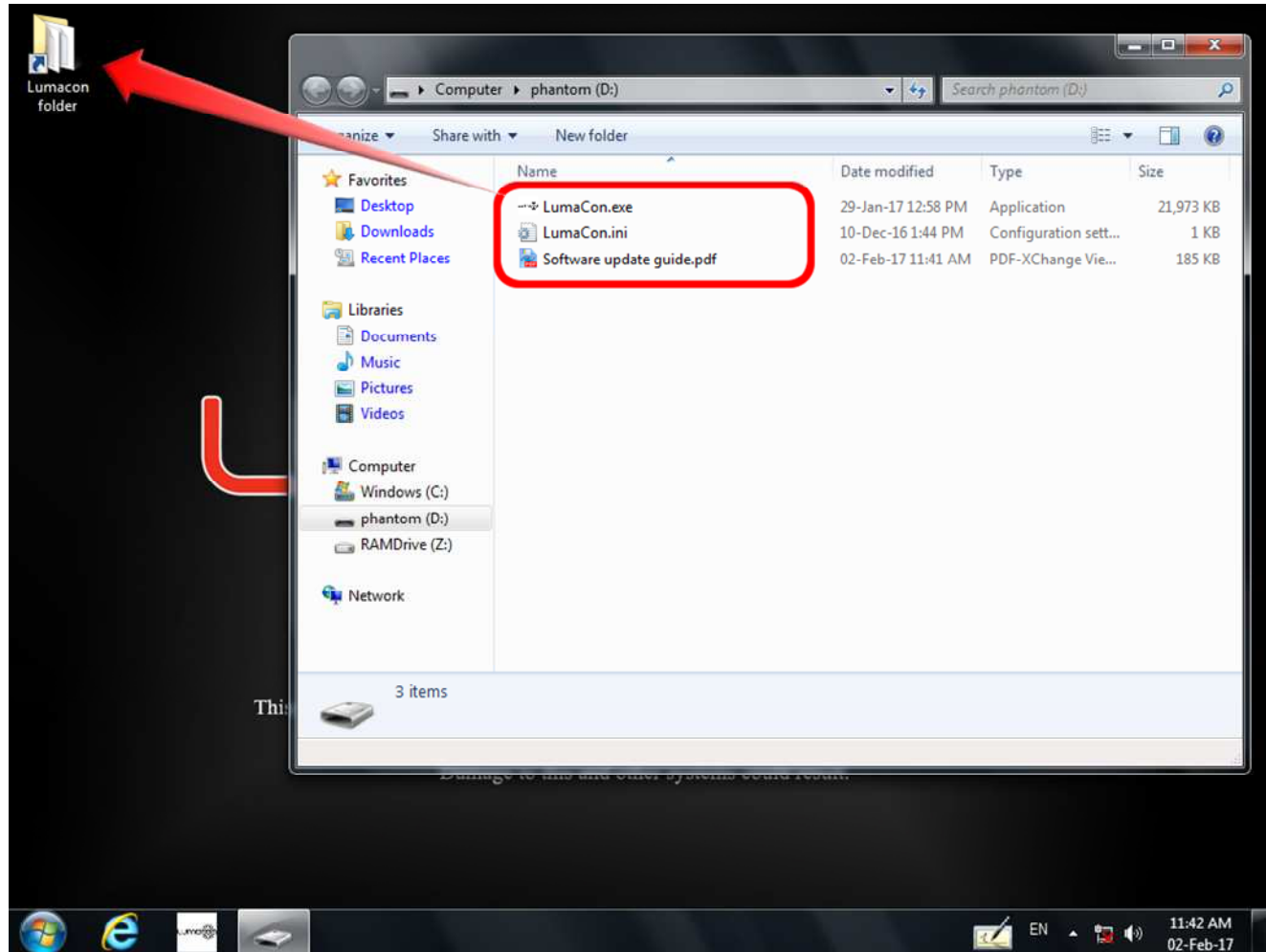


# Software update guide

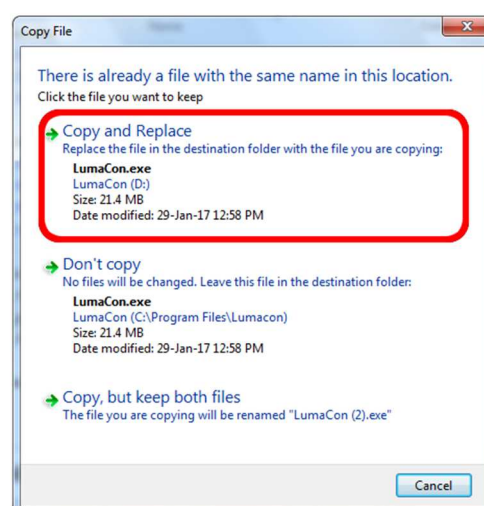
Version 1.01

The software update process contains only 6 steps;

- 1) (Re)start the LumaCon PC
- 2) Do not start the LumaCon software, otherwise start all over again at 1)
- 3) Drag all the files & folders from the (un-zipped) download-file into the LumaCon folder on the desktop.



- 4) When asked, confirm “Copy and replace” all the files.



- 5) Done. If required we have added revised user manuals within the software-package.
- 6) Enjoy